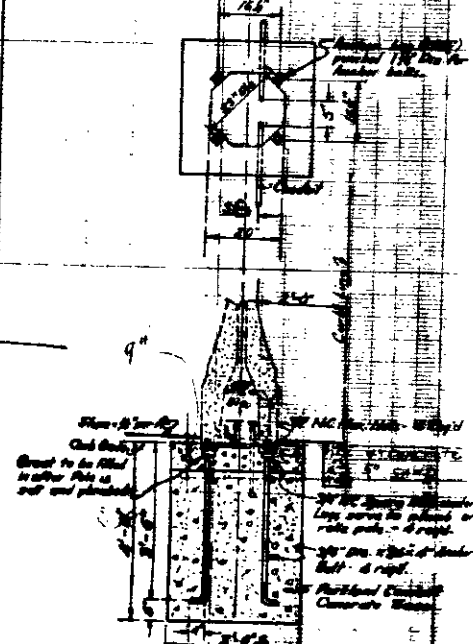


NOTES:
 1. Pole installed with door to curb.
 2. Conduit located to permit installation of 1 1/2" Transformer in base of pole.



DETAIL
ELECTROLIER FOUNDATION

1. Where existing utility lines are located, they shall be protected.
 2. Where utility lines are located, they shall be protected by a 19x36 galvanized steel sheet piling.

**BEGINNING OF PROJECT
STA 0+00**

Bench Mark El. 1126.54
 X on Light Base 5.2 Bench
 Base Line and Perris St.

DEPARTMENT OF ENGINEERING
CITY OF SAN BERNARDINO

**BASE LINE WIDENING
PERRIS ST. to MT VERNON**

SCALE 1" = 40'